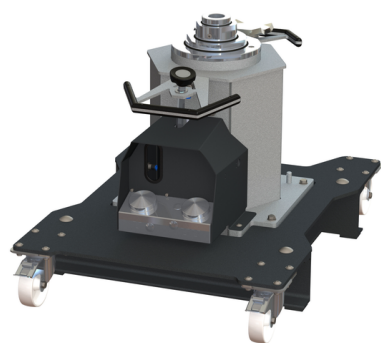


LIFTING TECHNOLOGY

PIT JACK

MPJ 16.5/1200 3S FA
VP 454281



MPJ 16.5/1200 3S FA

VP 454281

The axle and transmission jack lifts up to 16.5 t. The floor-running axle and transmission jack, with triple telescopic cylinders (max. stroke 1200 mm), is freely moveable; at 1000 kg it automatically lowers. Load-free, a compressed air speed control function ensures fast movement of the two telescopic segments as well as fast retraction of the piston rods. The equipment also includes an air motor with foot pedal control for lifting the piston rod under load.

PRODUCT DETAILS/ACCESSORIES

3-stage telescopic, free-moving, floor-running

Description:

Automatic axle and transmission jack with pneumatic motor and fast control in slim design specifically for dismantling assemblies and lifting vehicles up to 16.5 t

Control:

- Unique synchronised telescopic lifting cylinder for quick load lifting with fast control
- Efficient fast control for UP and DOWN movement integrated as standard
- Precision, user-friendly foot control using compact and robust operating unit for quick lift and load lift
- Delicate and precision lowering of the pit jack with tried & tested system with integrated dead man's control
- Telescopic stages protected against corrosion thanks to the Venturi effect (separation of hydraulic oil and airflow)
- Integrated cover to protect against unintentional operation

Design:

- Freely movable floor-running pit jack for flexible use at various work locations, e.g. workshops or work pit

- Floor-running carriage with four guide rollers, two of which are fitted with brakes to prevent rolling away (without load)
- Spring-based roll guard: jack automatically lowers itself to floor once a load capacity of about 1000 kg is reached, securing itself in the process
- Integrated inspection window for checking oil quality and quantity of the pit jack
- Optimised removal of the dismantled units thanks to low construction height of the jack due to ideal arrangement of the lifting unit in the carriage
- With its non-slip coating the carriage can be used as a secure working platform for ergonomic reasons
- Corrosion-resistant piston rods thanks to self-lubrication
- High-quality powder-coating protects against corrosive liquids and elevates quality look and feel on a lasting basis

Scope of delivery:

- Pit jack with hydro-pneumatic automatic control system
- Carriage with four guide rollers
- Standard support lugs 120 x 120 mm
- Operating instructions
- EC conformity certificate
- Colour: Jack base frame RAL 7040
 - Attachments and carriage RAL 7016

TECHNICAL DATA

Load capacity (CE)	16,500 kg
Fast stroke power	600 kg
Stroke distance	1200 mm
Lifting levels	3
Min. load pick-up height	683 mm
Max. lifting height	1883 mm
Chassis (L x W)	1010 x 760 mm
Rollers	80 mm (polyamide)
Support diameter inside/outside	45/80 mm
Piston rod diameter	80/115/170 mm

LIFTING TECHNOLOGY PIT JACK

MPJ 16.5/1200 3S FA
VP 454281



TECHNICAL DATA

Oil quantity/quality	27.5 l / HLP-D 10
Drive	350 l/min. 7-10 bar
Operating pressure	190 bar
Weight	362 kg

ACCESSORIES

ACCESSORIES - CARRIAGE

VZ 975920	Jack-mounted compressed air maintenance unit
VZ 975744	Pneumatic manual control cylinder with magnetic bracket
VZ 975919	Precision-control foot lever

ACCESSORIES - TRAVERSES, SUPPORT BRIDGES, SUPPORT SYST.

VZ 975670	Self-locking axle lifting beam with 14.5 t support system MODEL: SAT 14.5-760
VZ 975813	Self-locking axle lifting beam with 14.5 t support system MODEL: SAT 14.5-820
VZ 975622	Self-locking axle lifting beam with 14.5 t support system MODEL: SAT 14.5-910 STOCK
VZ 975741	Self-locking axle lifting beam with 14.5 t support system MODEL: SAT 14.5-910L
VZ 975743	SAT Rollers Retrofit Kit, Spring Mounted, with Plastic Rollers
VZ 975814	SAT Wheel Deflector Plates (2 pcs)
VZ 975820	Spacer Block for Support Systems SAT (65 x 110 x 320 mm)
VZ 975903	Axle lifting beam up to 15 t Adjustment range max. 1010 mm MODEL: AT 15
VZ 975688	Axle Traverse Length Variation
VZ 975906	Axle traverse Long for busses, com. vehicles, 16.5t load cap. MODEL: AT 16.5 L1500
VZ 975696	Axle Crossbar Load Capacity 3.5 t Model: ATV 3.5
VZ 975925	Support bridge for axle traverses up to 14.5 t load capac. MODEL: TAB 15
VZ 975326	Support Bridge AB w/o Centre Cut-Out up to 14,5 t Load Cpc. MODEL: AB 15
VZ 975686	Support System Version D/F
VZ 975687	Support System Version E

ACCESSORIES - LOAD LIFTING PADS, LIFTING PADS, EXTENDERS, SUPPORT TUBES

VZ 975280	Narrow Lifting Pad, 20 t Load Capacity, galvanized, up to 100 mm (Pin Diameter 45 mm)
VZ 975285	Large Lifting Pad, galvanized, Load Capacity 20 t MODEL: GP 175/20
VZ 975283	Large Lifting Pad, galvanized, Load Capacity 16.5 t MODEL: GP 220

VZ 975569	Pads with mushroom support N with pin diameter 45 mm MODEL: PS-N
VZ 975409	Wooden Lifting Pad, 6 - 16 t Load Capacity, Prismatic Design, MODEL: HP 06-16
VZ 975287	Lifting Pad w. Rubber Surface, 11 t Load Capacity MODEL: RPG 10
VZ 975289	Plug-In Extender, L = 100 mm, MODEL: ZS 100/45
VZ 975290	Plug-In Extender, L = 150 mm, MODEL: ZS 150/45
VZ 975410	Plug-In Extender, L = 200 mm MODEL: ZS 200/45
VZ 971221	Support Plate Extension 100 mm galvanized (2 pcs.) Diameter of supports 35 mm
VZ 975330	Support Tube L = 400 mm, Load Capacity: 20 t (Pin Diam. 45 mm)
VZ 975331	Support Tube L = 600 mm, Load Capacity: 20 t (Pin Diameter 45 mm)
VZ 975571	Support Tube L = 800 mm, Load Capacity: 15 t (Pin Diameter 45 mm)
VZ 975414	Spacer Block for Support Systems TAB (100 x 140 x 450 mm)
VZ 975732	Gearbox Plate, Load Cpc. 1.0t Model: GP 1000
VP 975915	Gearbox Mounting Tool with swivelling flat supports MODEL: GMT 800
VZ 975916	Swivel supports for GMT 800 w. locking function
VZ 975917	Angle clamp supports for GMT 800 with rubber pad
VZ 975918	Semicircular flex supports for GMT 800 with rubber pads
VZ 975611	Pit crossing continuously adjustable for pits w/o wheel guides
VZ 975612	Pit crossing continuously adjustable for pits with wheel guides
VZ 975613	Railings for pit crossing continuously adjustable

SUPPLEMENTARY CHARGES

VT 998106	Transportkosten Grubenheber Abstütssystem, Getriebeplatten
VT 998108	Transportkosten Abstütssystem, Getriebeplatten
VM 996148	Montagekosten Grubenheber
VV 997600	Packaging Floor-running jack not stackable -EUROPE/OVERSEAS-
VV 997601	Packaging Lifting beams, gearbox plates, stackable -EUROPE/OVERSEAS-